

# prices

70x12	<b>1 bed</b>	<b>2 bed</b>
	£134,625	£136,625
	excl VAT	excl VAT

# options

## technical

**Canaline 70**  
Canaline 70 4 cylinder engine with twin alternators, PRM 260 Hydraulic Gearbox. Engine control panel with tachometer, water temperature, oil pressure, battery warning lights and multifunction LED display (clock, voltage, trip, hours), RCD emission compliant. 3 year warranty. £2,495

**Victron 3000/120 Combi** £1,495

**Travel power 3.5kw(240v)** £3,250

## external

**Salt Water Packs**  
If you are planning on sailing near or in brackish water then you will need at least Option 1

**Option 1:** Shot blast hull sides to rubbing strake + 3 coats 2 pac coal tar + 1 coat antifoul + 4 salt anodes £1,500

**Option 2:** All of option 1 + shot blast base plate + 3 coats 2 pac coal tar to base + 1 coat antifoul to base £2,100

**Houdini Hatch (Each)** £995

**Side door internal glazed screen** £595

**Rear Bimini Cover with Led Lighting** £2,950

**Teak effect decking** POA

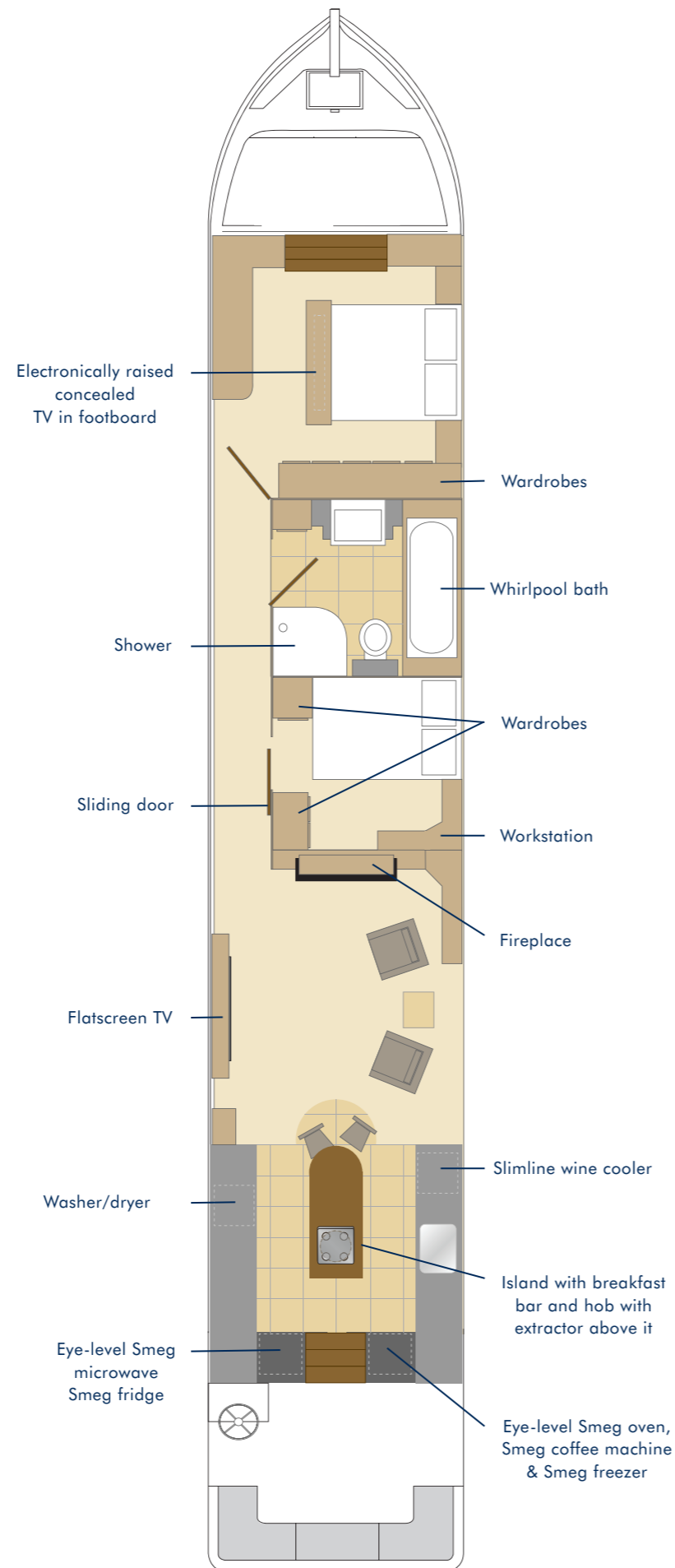
## internal

**Satellite Tv Manual** £945

**Satellite Tv Auto** £1,950

**Whirlpool Bath Upgrade** £1,395

All 'option' prices include VAT at 20%. We reserve the right to alter the specification at any time without prior notice.



specification

# The Abode



The size and high specification of the Abode wide beam boat makes it the ideal alternative to a luxury apartment. Packed with appliances, exclusive features and sumptuous decorative touches, the Abode provides all the benefits of on-water living with virtually none of the compromises.

The galley, saloon and bathroom are fitted out to exceptional standards, including such refinements as a built-in wine cooler, 42" flat screen TV, a large bath with optional whirlpool and much, much more.

It's also the perfect boat for entertaining. The standard size is 70' x 12' (other sizes available), resulting in a spacious interior with two double bedrooms and a square stern with upholstered built-in seating area that's ideal for al fresco snacks and drinks.

Beautiful but also very practical, the Abode from the New & Used Boat Co has been planned in every detail - from the choice of engine to the range of fabrics - to suit those independent-minded people who want to make the waterways their home.



**Derby Office** Mercia Marina, Findern Lane, Willington, Derbyshire DE65 6DW **Tel:** 01283 707357 **Fax:** 01283 707364

**Hanbury Office** Hanbury Wharf, Hanbury Road, Droitwich, Worcester WR9 7DU **Tel:** 01905 794445 **Fax:** 01905 776750

[www.newandusedboat.co.uk](http://www.newandusedboat.co.uk)

The Hanbury Range is built by Orchard Marina and Collingwood Boats and is exclusively available through the New and Used Boat Co.

## exterior finishes

The Abode is built for lasting good looks both inside and out. To the exterior, layers of high performance primers and undercoats are applied before being painstakingly coach-painted in beautiful high gloss marine enamel.

The standard finish is a single colour with a contrasting coach-line, but almost all decorative schemes can be supplied on request, from additional colours for the side panels to traditional decorations such as bow name-panels.

To all relevant areas such as decks, roofs and gunwales a non-slip coating is applied for safety. The lower hull is prepared and bitumen-blackened, and has four anodes fitted ready for use in

fresh water (if you intend to keep your boat in salt or brackish water please ask about suitable alternative protection). The bow doors are of glazed hardwood, whilst the rear doors are all steel with hardwood-panelling.

There is a mix of windows and port holes fitted to both sides with a choice of 12" or 18" port holes and a mix of 18"/36"/42" sized windows. All windows are in polished aluminium, whilst other exterior fittings are chrome, providing the perfect combination of durability and easy maintenance. Fully fitted with navigation lights, and with 3 rubbing strakes (one full length) the Abode is ready for cruising, both day and night.

## interior finishes

The interior lining is of Oak or Ash faced plywood with matching hardwood trims, complemented by a painted tongue & groove effect ceiling, plus painted or wallpapered panels above the gunwale. For a lasting appearance, the interior woodwork is finished in a high performance water-based, low VOC, clear acrylic finish which is extremely hardwearing, has minimal impact on the natural colour of the timber, and is kinder to the environment.

To ensure both strength and stability, fitted furniture is

constructed from high quality moisture-resistant veneered board, again with solid hardwood cappings. All soft furnishing fabrics are high-quality, modern, upholstery-weight materials designed especially for seating and window dressings. There are hundreds of stylish colours and designs to choose from.

Flooring options have been carefully selected for their aesthetic appeal and durability with a choice of carpet, laminates or solid hardwood in a comprehensive range of colours and designs.

## technical

### Stern

Square cruiser stern with built in seating and hydraulic wheel steering

### Decks

All self-draining - Teak effect decking available as an optional extra

### Steel specification

10mm/6mm/5mm/4mm plating

### Water, Fuel and Gas storage

Stainless Steel water tank 120 gallons (approx). Pressure tested diesel tank holding 60 gallons (approx) with recessed filler and drain off. (Water & Fuel level gauges included.) Gas Locker at bow, with space for two 13kg bottles.

### Engine

Canaline 60 4 cylinder engine with twin alternators, PRM 150 Hydraulic Gearbox. Engine control panel with tachometer, water temperature, oil pressure, battery warning lights and multifunction LED display (clock, voltage, trip, hours), RCD emission compliant. 3 year warranty.

### Weed Hatch

Quick release

### Fender Eyes

Recessed Chrome

### Pole & Plank Rack

Fitted to roof

### Heating system

Diesel fired central heating system, with timer, running 5 powder-coated radiators and a heated towel rail through the twin coil 13 gallon (approx) calorifier, which is also connected to the engine cooling circuit, meaning that the engine will heat the hot water. A 1kw immersion heater is also fitted to give hot water from the shore power. Additionally there is a solid fuel stove in the saloon.

### Power System

The Abode comes with a 240v system as standard, tested and installed to the relevant RCD standards. This has plenty of double sockets in brushed stainless steel finish and simply needs plugging into the shore power. Sterling 2500/70 pure sine wave combination inverter/charger ensure you're never without power.

### 12v system

4 x 110A/h Domestic batteries, which are charged by a dedicated alternator. These are connected to a purpose-built high quality distribution panel, and this carries individual breakers for all the appliances, as well as voltage and amperage readouts. The lighting is a combination of LED down lights and halogen wall lights throughout the boat. There are also deck lights to the rear deck.

### Bow Thruster

Bow Thruster is fitted as standard along with 2 dedicated batteries.

### Rear Deck Area

The square cruiser stern of the Abode is exceptionally comfortable and the perfect area for socialising and relaxing whilst cruising or moored up. The wraparound rear seating area has storage below and comes with weatherproof, upholstered, removable cushions. The boat can be steered with either the wheel (fitted hydraulic steering system) or the conventional tiller (which offers a saving on cost). There is a further seat locker to the front of the deck alongside the steering position and there are 2 deck lights fitted. We can also supply an optional Bimini cover with LED lighting or a full pram-style cover as an option.

### Galley

Cooking on board is a pleasure thanks to the clever use of generous working space and sophisticated appliances. Entered from the stern, the large galley has plenty of working areas, with granite worksurfaces port and starboard. There are a host of appliances including a large Smeg fridge, a freezer, slimline wine cooler, Smeg oven, Smeg microwave, Smeg coffee machine and a washer dryer. There is a central island with a hardwood worksurface and breakfast bar to seat 3. A 5 burner hob is set in the island, with an extractor above.

### Saloon

The Abode's attractive saloon area is the perfect space to make your own with freestanding furniture. For state-of-the-art entertainment a 42" flat screen TV & DVD are built into an under-gunwale unit and there is an option to have a satellite system too. To ensure the cosiest environment there is a fireplace with solid fuel stove set on a tiled hearth, and this is centrally located on the forward saloon bulkhead. Additional atmospheric lighting is provided by picture lights.

### Bedroom Two/Study

Amaze your guests with just how comfortable on-board living can be. This generous room offers a double bed, two wardrobes and a desk/dressing table with picture light above. If required this bedroom could be reconfigured to offer one or two single beds.

### Bathroom

The spacious bathroom, with glass panelled hardwood doors, is both beautiful and practical. It features a large corner shower which is fitted with a waterproof panelling system to provide a contemporary and watertight finish. A feature vanity unit has a hand basin resting on a granite worksurface. The toilet is an electric macerator pump out and there is a full size bath fitted, with a whirlpool option also available for the ultimate in luxury and relaxation.

### Master Bedroom

The master bedroom is a spacious environment generously supplied with a king size bed and all you need to wind down after a busy day. Situated at the bow, it includes glazed doors leading onto the bow deck, large windows and three mirrored wardrobes to provide a light and airy ambience. Wallpapered panels complete the striking interior scheme, and plenty of further storage is provided by fitted drawers and cupboards. For extra luxury there's a 32" flat screen TV which rises smoothly out of the footboard for night-time viewing.

accommodation